

# AT-LP3XBT

**Quick Start Guide**  
Automatic Wireless Turntable

**Guide de démarrage rapide**  
Platine sans fil automatique

**Kurzanleitung**  
Automatischer kabelloser Plattenspieler

**Guida rapida**  
Giradischi wireless automatico

**Guía de inicio rápido**  
Giradiscos inalámbrico automático

**Guia de início rápido**  
Toca-discos automático sem fio

**Краткое руководство по установке**  
Автоматический беспроводной проигрыватель

**快速启动指南**  
自动无线唱盘机

**快速入門指南**  
自動無線唱盤機

**간편 사용 설명서**  
자동 무선 턴테이블

Audio-Technica Corporation  
2-46-1 Nishi-naruse, Machida, Tokyo 194-8666, Japan  
www.audio-technica.com  
©2021 Audio-Technica Corporation  
Global Support Contact: www.at-globalsupport.com

162502300-01-01

ver.1 2021.08.01



<https://www.audio-technica.com>

**Support**

For more information on how to use this product and troubleshoot any problems, refer to the user manual on the Audio-Technica website.

**Support**

Pour plus d'informations sur l'utilisation de ce produit et la résolution des problèmes, reportez-vous au manuel de l'utilisateur sur le site Web d'Audio-Technica.

**Unterstützung**

Weitere Informationen zum Gebrauch dieses Produkts und zur Behebung eventueller Probleme entnehmen Sie bitte der Bedienungsanleitung auf der Website von Audio-Technica.

**Assistenza**

Per maggiori informazioni sull'utilizzo del presente prodotto e per la risoluzione di eventuali problemi, fare riferimento al manuale dell'utente sul sito Audio-Technica.

**Asistencia**

Para más información sobre el uso de este producto y la resolución de problemas, consulte el manual de usuario en el sitio web de Audio-Technica.

**Supporte**

Para obter mais informações sobre como usar este produto e solucionar qualquer problema, consulte o manual do usuário no site da Audio-Technica.

**Техническая поддержка**

Для получения дополнительной информации о том, как использовать этот продукт и устранять любые неисправности, обратитесь к руководству пользователя на веб-сайте Audio-Technica.

**支持信息**

关于如何使用本产品及解决各种问题的详细信息, 请参阅“铁三角”网站上的用户手册。

**支援資訊**

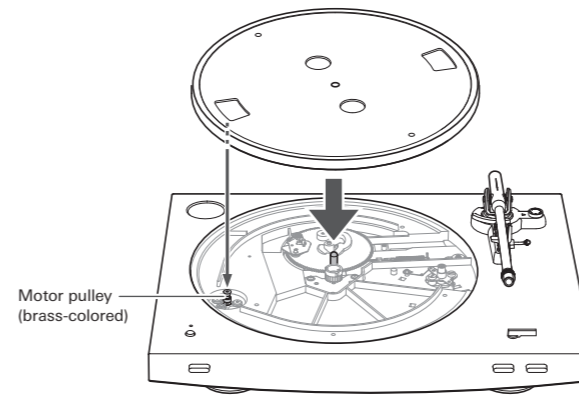
有關本產品的使用方法以及各種問題的故障排除方法, 請參閱「鐵三角」網站上的使用說明書。

**지원**

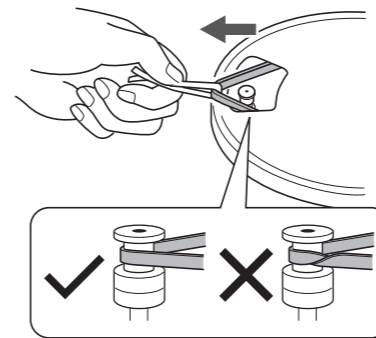
본 제품의 사용법 및 문제 해결에 관한 자세한 사항은 Audio-Technica 웹사이트의 사용자 설명서를 참조하십시오.

## Preparation

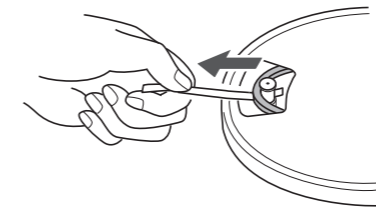
### 1 Set the platter.



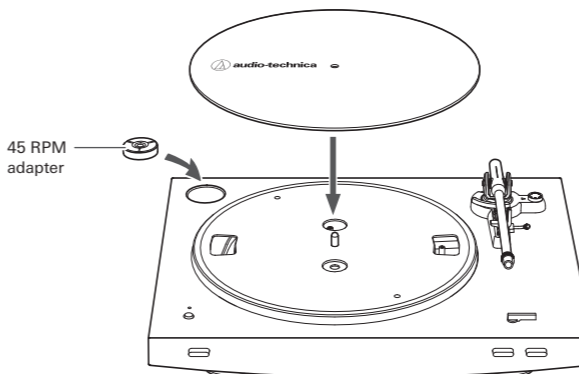
### 2 Attach the drive belt to the motor pulley (brass-colored).



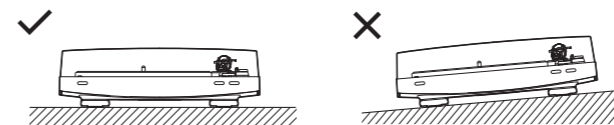
### 3 Remove the red ribbon from the drive belt.



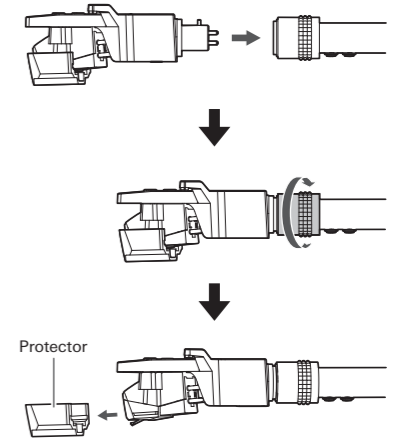
### 4 Set the felt mat.



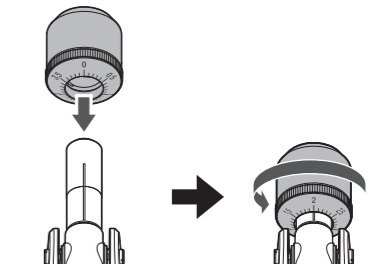
### 5 Mount the product on a level surface.



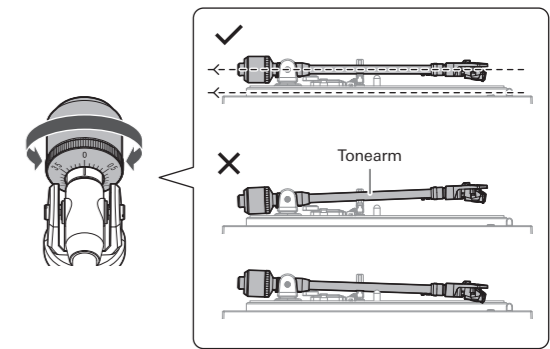
### 6 Insert the headshell into the tonearm, and remove the cartridge's protector.



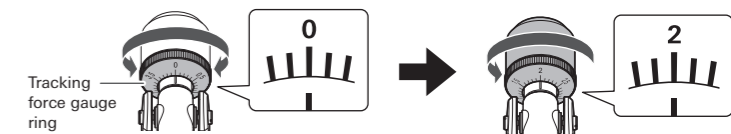
### 7 Attach the counterweight to the back of the tonearm, and slowly turn it counterclockwise (to the left).



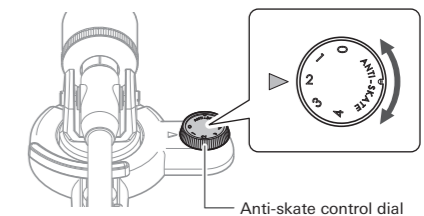
### 8 Turn the counterweight to adjust the tonearm's balance so that the tonearm is level when you release the headshell.



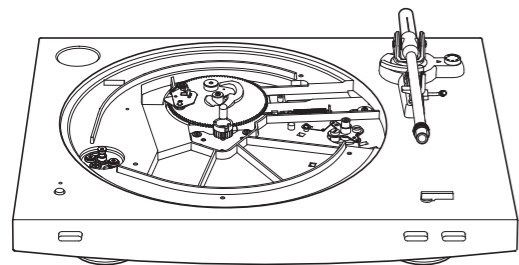
### 9 Set the tracking force gauge ring to the "0" position. After that, turn the counterweight and the tracking force gauge ring together counterclockwise (to the left) to the "2" position.



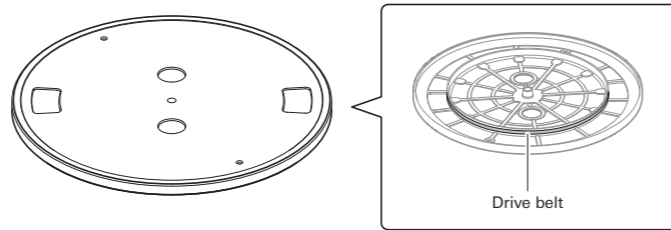
### 10 Set the anti-skate control dial to "2", the same value as the tracking force value.



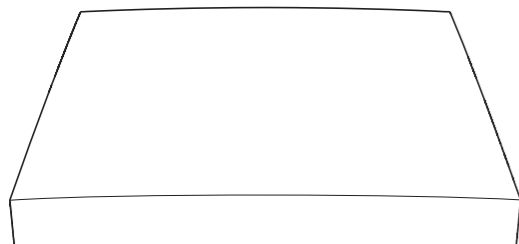
## Contents



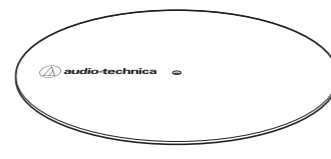
Turntable body



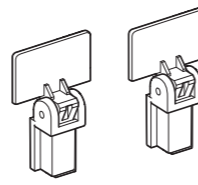
Platter (with drive belt)



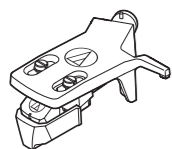
Dust cover



Felt mat



Dust cover hinges



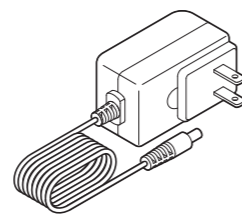
Headshell with VM stereo cartridge



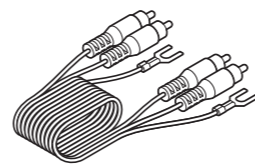
Counterweight



45 RPM adapter



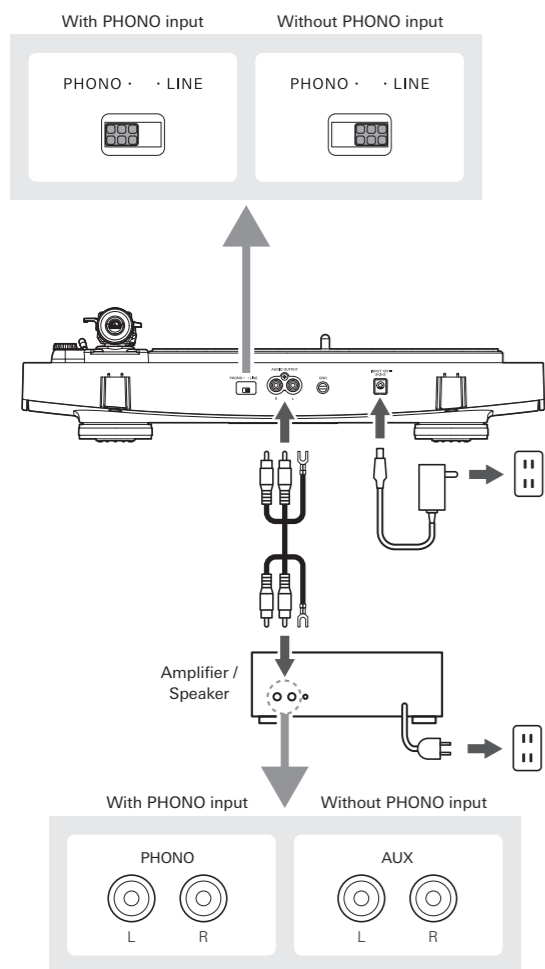
AC adapter



RCA audio cable

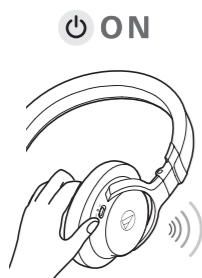
## Wired Connection

This product has a built-in phono equalizer function. You can use the product, even if you do not have a phono amplifier or connectable equipment with a built-in phono amplifier, by connecting an active speaker, etc. Use the pre-amplifier selector switch to set the output.

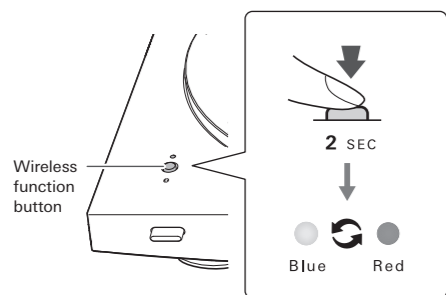


## Wireless connection

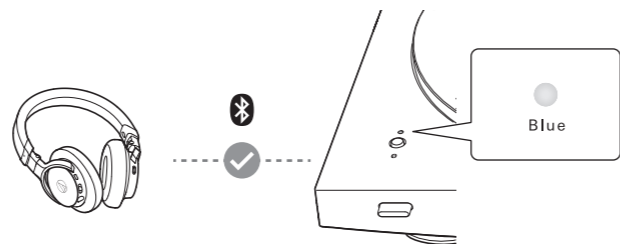
1 Set your Bluetooth headphones, speakers, etc. to pairing mode.



2 Press and hold the wireless function button.

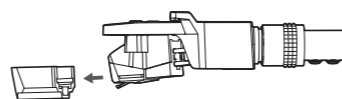


3 When pairing is complete, the indicator LED lights in blue.

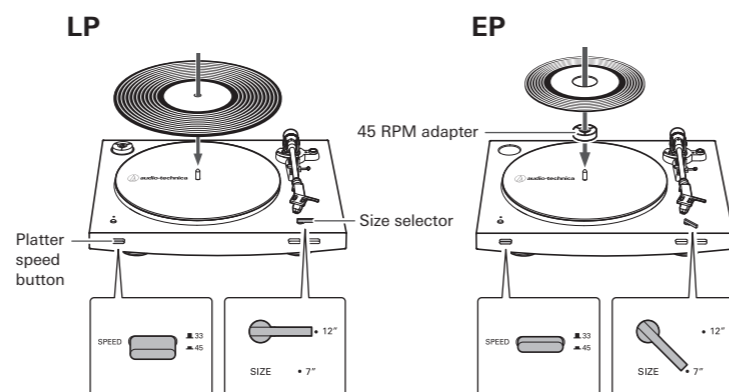


## Play

1 Remove the cartridge's protector.

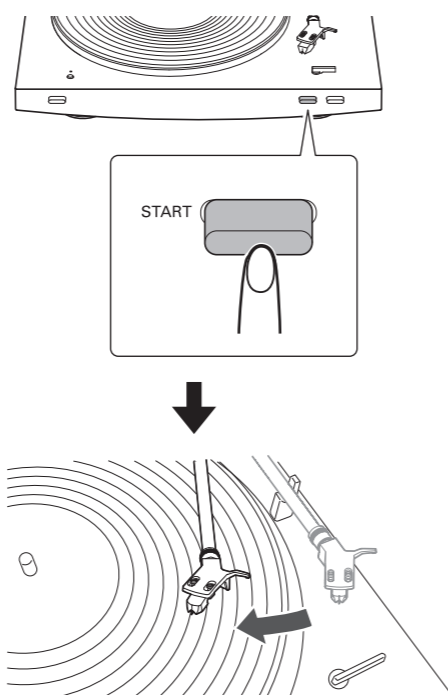


2 Place a record on the felt mat, select the size with the size selector, and then select the speed with the platter speed button.



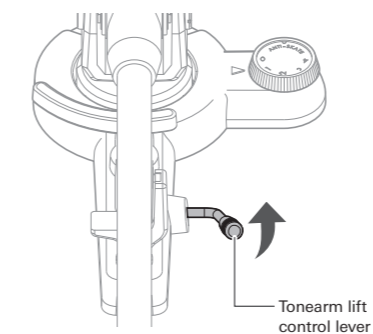
## Auto

1 Press the START button.

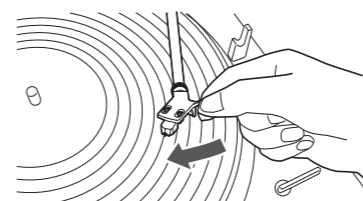


## Manual

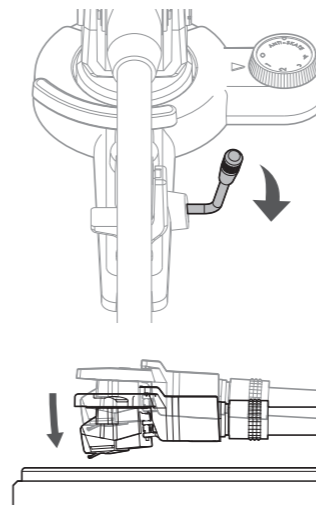
1 Raise the tonearm by lifting the tonearm lift control lever to the UP position.



2 Position the tonearm over the desired location (groove) on the record.

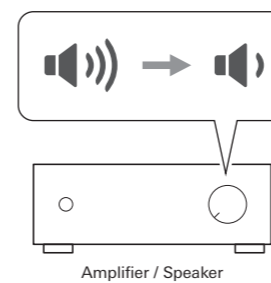


3 Lower the tonearm by moving the tonearm lift control lever to the DOWN position.

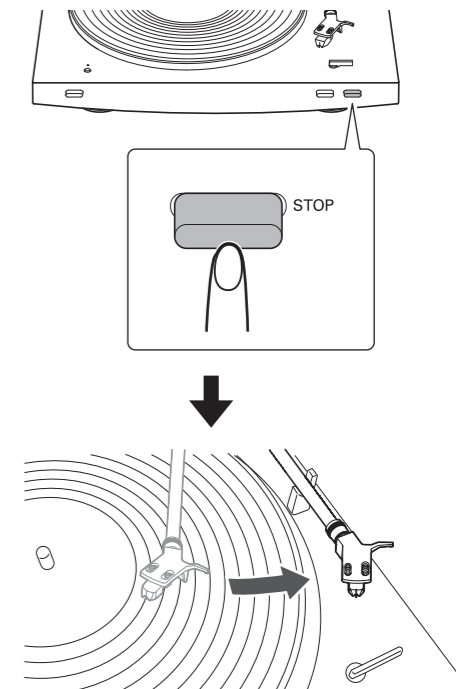


## Stop

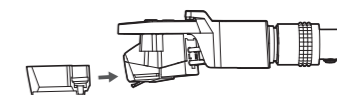
1 If the product is connected via a wired connection, lower the volume of the connected device (amplifier, etc.).



2 Press the STOP button.



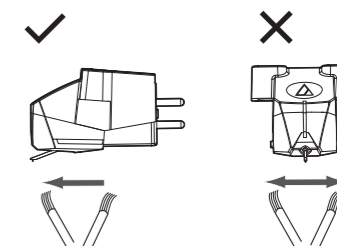
3 Attach the cartridge's protector.



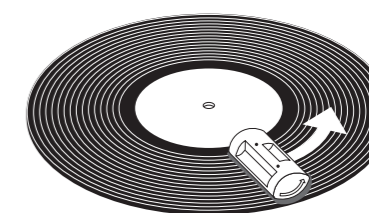
## Cleaning

For details about turntable and cartridge care accessories, visit <https://www.audio-technica.com>.

## Stylus



## Record



• The Bluetooth® word mark and logos are registered trademarks owned by Bluetooth SIG, Inc. and any use of such marks by Audio-Technica Corporation is under license. Other trademarks and trade names are those of their respective owners.