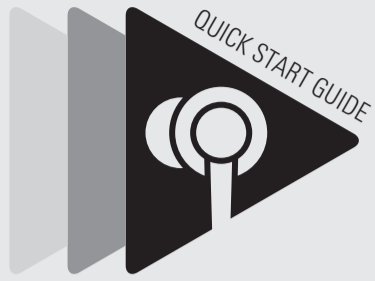




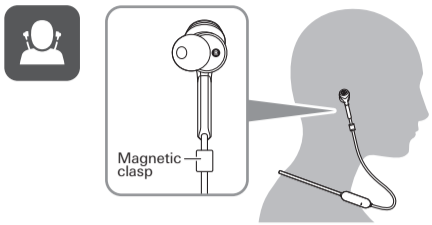
audio-technica



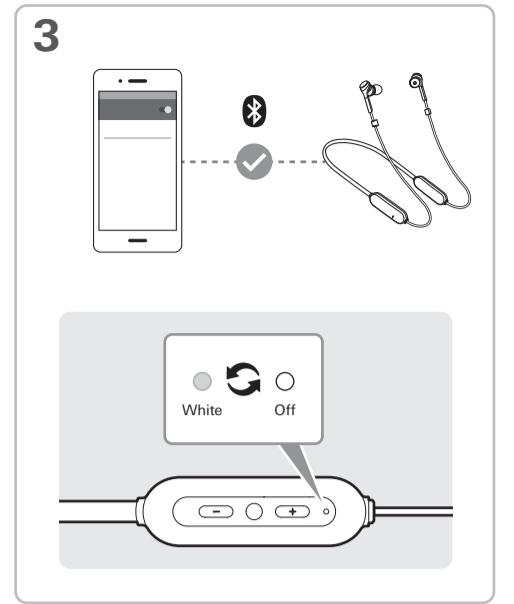
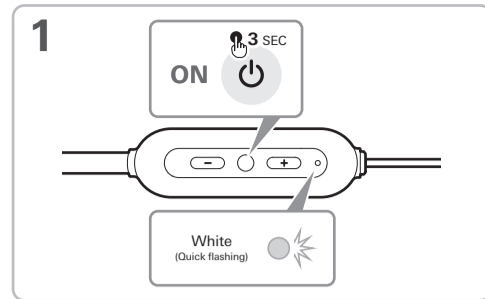
ATH-CKS660XBT

Check

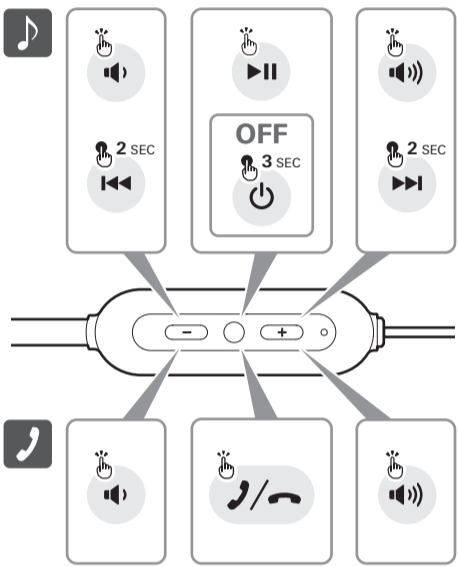
- Headphones
- Eartips (XS, S, M, L)
- USB charging cable
- Magnetic clasp
- Quick start guide (this leaflet)
- Caution guide



Pairing



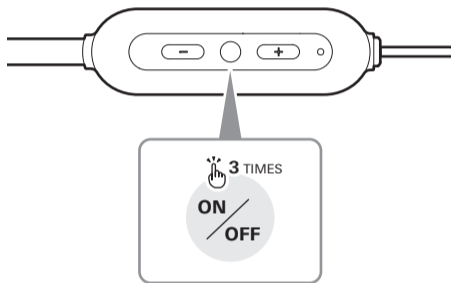
Music / Phone



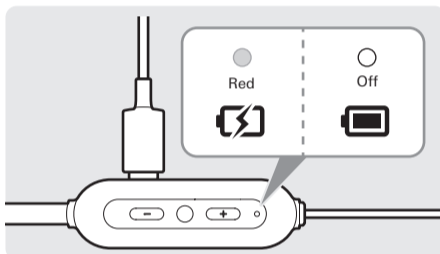
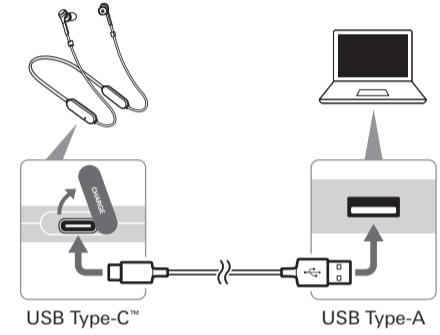
Low latency mode

When you play games or watch videos, you can play them with less delay.

(Bluetooth communication may be easily interrupted due to obstacles or radio wave conditions.)



Charge



Support

For more information on how to use this product and troubleshoot any problems, refer to the user manual on the Audio-Technica website.



www.audio-technica.com

• The Bluetooth® word mark and logos are registered trademarks owned by Bluetooth SIG, Inc. and any use of such marks by Audio-Technica Corporation is under license. Other trademarks and trade names are those of their respective owners.

• USB type-C™ is a trademark of USB Implementers Forum.

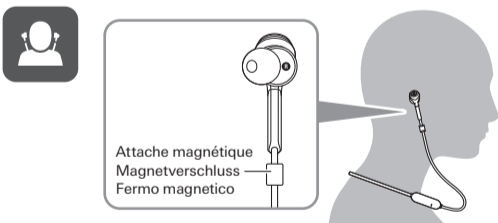
Audio-Technica Corporation
2-46-1 Nishi-naruse, Machida, Tokyo 194-8666, Japan
www.audio-technica.co.jp
©2020 Audio-Technica Corporation

ver.1 2020.07.01

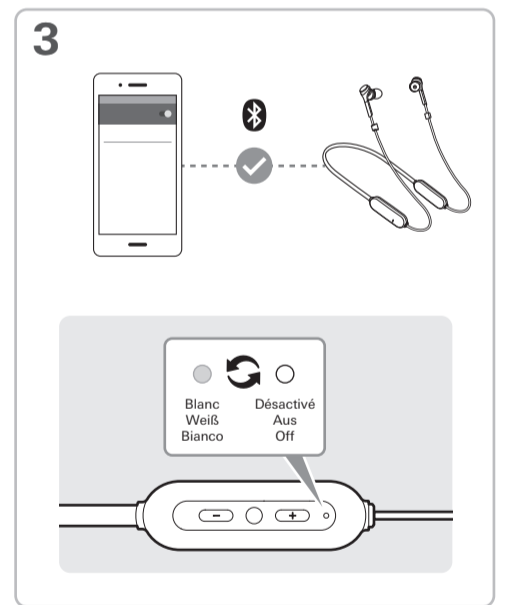
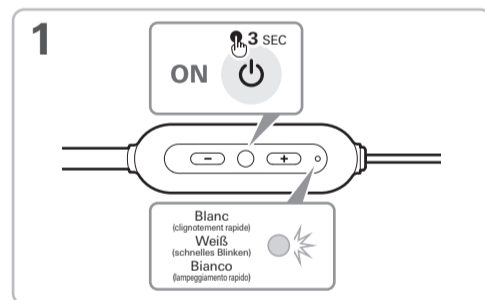
Français / Deutsch / Italiano

Vérifier / Kontrolle / Controllo

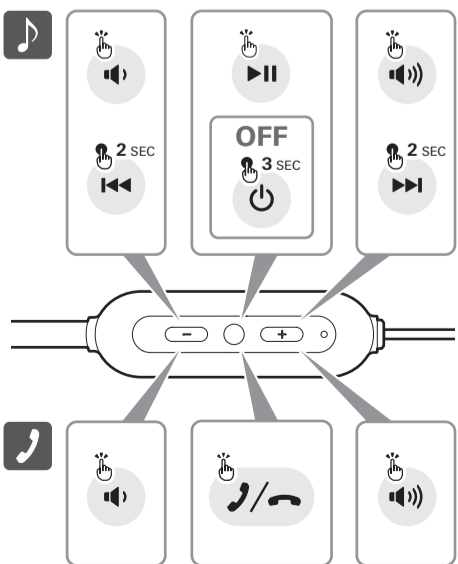
- Ecouteurs / Kopfhörer / Cuffie
- Embouts (XS, S, M, L) / Ohrstöpsel (XS, S, M, L) / Copriauricolari (XS, S, M, L)
- Câble de recharge USB / USB-Ladekabel / Cavo per la carica USB
- Attache magnétique / Magnetverschluss / Fermo magnetico
- Guide de prise en main (ce dépliant) / Kurzanleitung (dieser Handzettel) / Guida rapida (questo opuscolo)
- Guide de mise en garde / Sicherheitsanweisungen / Guida precauzionale



Appairage / Paarung / Associazione



Musique/Téléphone / Musik/Handy / Musica/Telefono



Mode latence faible / Modus mit geringer Latenz / Modalità a bassa latenza

Lorsque vous jouez à des jeux ou regardez des vidéos, vous pouvez le faire avec moins de latence.

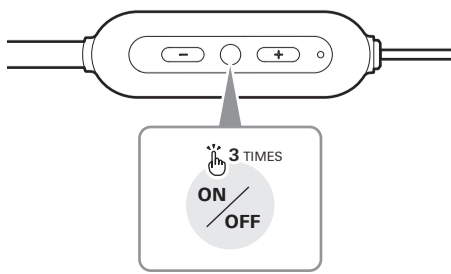
(La communication Bluetooth peut s'interrompre facilement à cause des obstacles ou en présence d'ondes radio.)

Wenn Sie Spiele spielen oder Videos ansehen, tritt weniger Verzögerung auf.

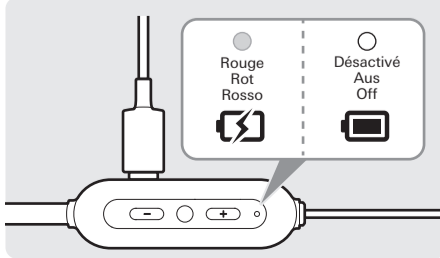
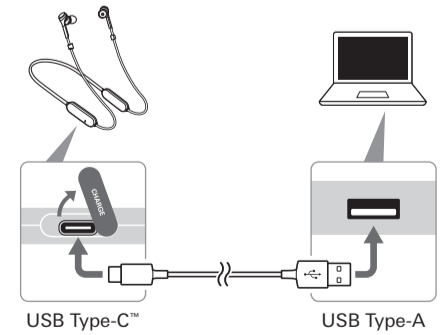
(Die Bluetooth-Kommunikation ist anfällig für Unterbrechungen durch Objekte oder Funkwellen.)

Quando si gioca o si guardano video, il ritardo è minore.

(La comunicazione Bluetooth può essere facilmente interrotta dalla presenza di ostacoli o onde radio.)



Charge / Laden / Carica



Support / Unterstützung / Assistenza

Pour plus d'informations sur l'utilisation de ce produit et la résolution des problèmes, reportez-vous au manuel de l'utilisateur sur le site Web d'Audio-Technica.

Weitere Informationen zum Gebrauch dieses Produkts und zur Behebung eventueller Probleme entnehmen Sie bitte der Bedienungsanleitung auf der Website von Audio-Technica.

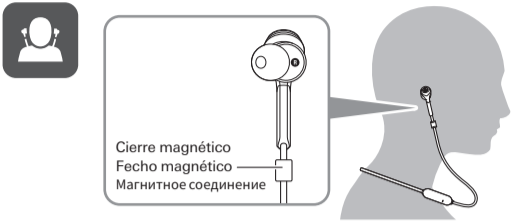
Per maggiori informazioni sull'utilizzo del presente prodotto e per la risoluzione di eventuali problemi, fare riferimento al manuale dell'utente sul sito Audio-Technica.



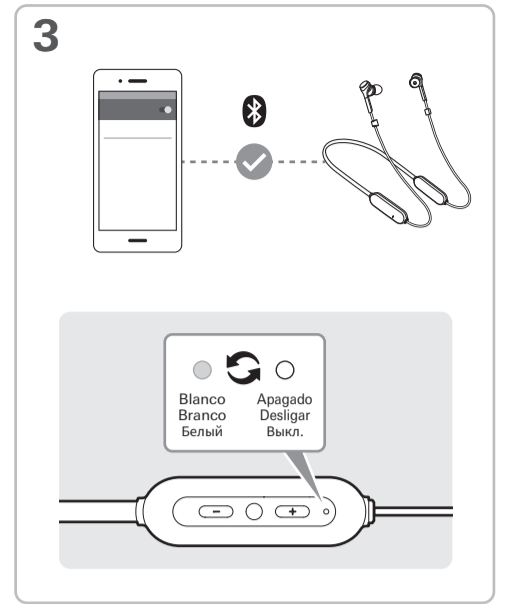
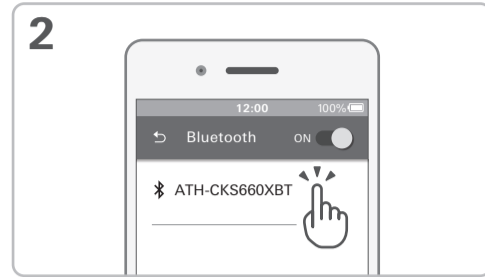
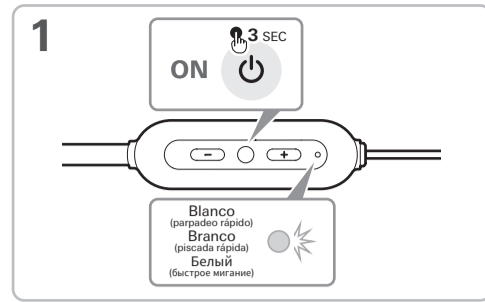
www.audio-technica.com

✓ Comprobar / Conteúdo da embalagem / Проверка

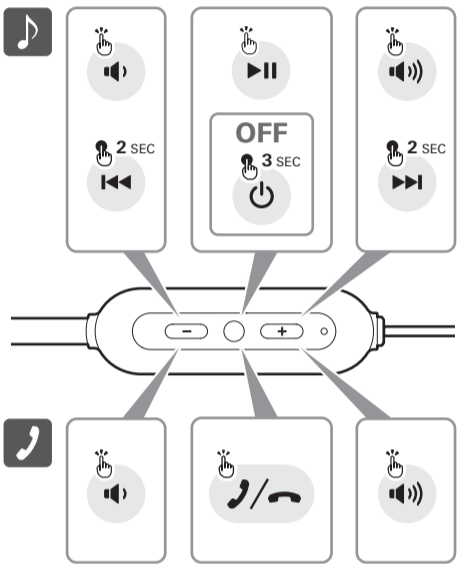
- Auriculares / Fones de ouvido / Наушники
- Tapones (XS, S, M, L) / Ponteiros (PP, P, M, G) / Ушные вкладыши (XS, S, M, L)
- Cable de carga USB / Cabo de carga USB / USB-кабель для зарядки
- Cierre magnético / Fecho magnético / Магнитное соединение
- Guía de inicio rápido (este folleto) / Guia rápido (este folheto) / Краткое руководство пользователя (этот листок)
- Guía de precauciones / Guia de precauções de segurança / Руководство по мерам предосторожности



Emparejamiento / Emparelhamento / Сопряжение



Música/Teléfono / Música/Telefone / Музыка/Телефон

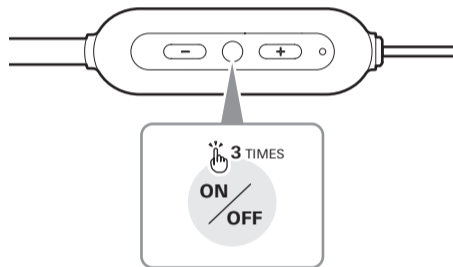


Modo de baja latencia / Modo de baixa latência / Режим низкой задержки

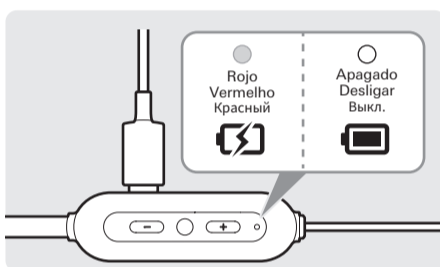
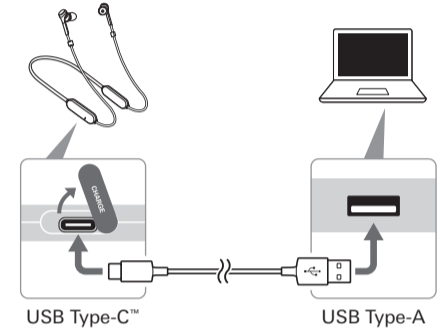
Al jugar o ver videos, se puede jugar con menos retraso.
(La comunicación por Bluetooth puede interrumpirse fácilmente debido a obstáculos o propagación de ondas de radio.)

Quando você joga ou assiste a vídeos, pode fazê-lo com menos atraso.
(A comunicação Bluetooth pode ser facilmente interrompida devido a obstáculos ou condições de ondas de rádio.)

Вы можете уменьшить время задержки во время игр или просмотра видео.
(Связь через Bluetooth может быть легко прервана препятствиями или радиоволнами.)



Carga / Carregar / Заряд



Asistencia / Suporte / Техническая поддержка

Para más información sobre el uso de este producto y la resolución de problemas, consulte el manual de usuario en el sitio web de Audio-Technica.

Para obter mais informações sobre como usar este produto e solucionar qualquer problema, consulte o manual do usuário no site da Audio-Technica.

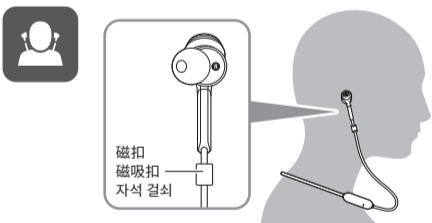
Для получения дополнительной информации о том, как использовать этот продукт и устранять любые неисправности, обратитесь к руководству пользователя на веб-сайте Audio-Technica.



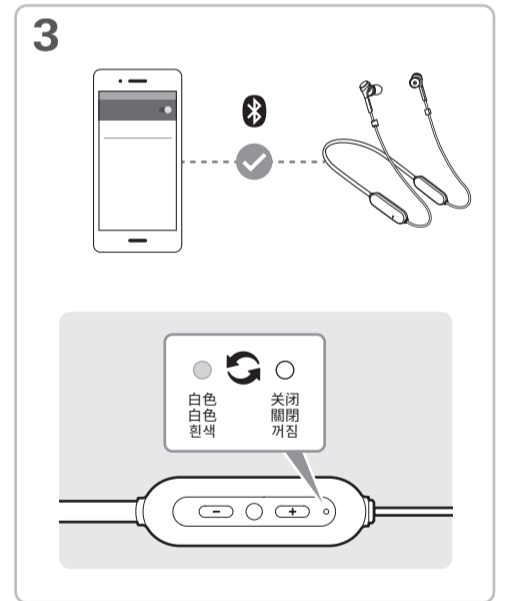
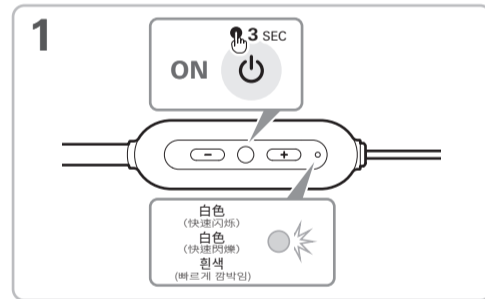
www.audio-technica.com

✓ 检查 / 検査 / 확인

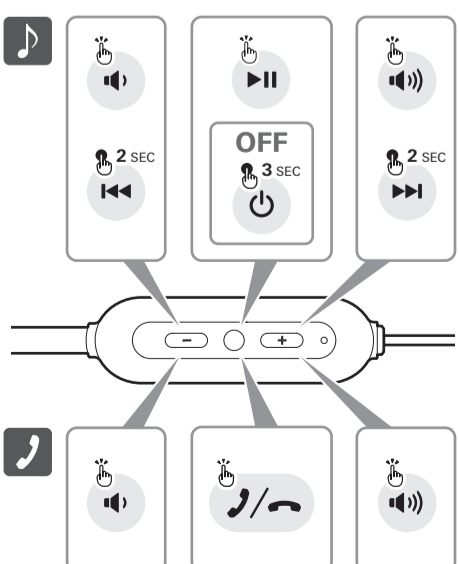
- 耳机 / 耳機 / 헤드폰
- 耳套 (XS、S、M、L) / 耳塞 (XS、S、M、L) / 이어팁(XS, S, M, L)
- USB充电线 / USB充電線 / USB 충전 케이블
- 磁扣 / 磁吸扣 / 자석 걸쇠
- 快速入门指南 (本说明书) / 快速入門指南 (本手冊) / 빠른 시작 가이드(본 소책자)
- 注意事项指南 / 注意事項 / 주의사항 안내



配对 / 配對 / 페어링



音乐/电话 / 音樂/電話 / 음악/전화

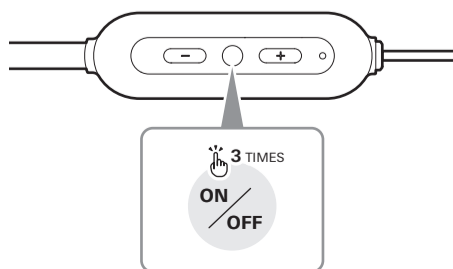


低延迟模式 / 低延遲模式 / 저지연 모드

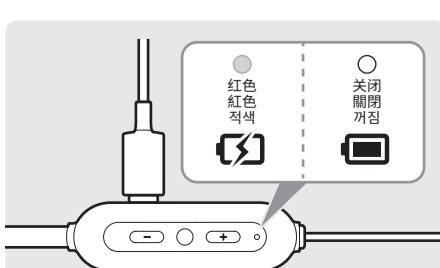
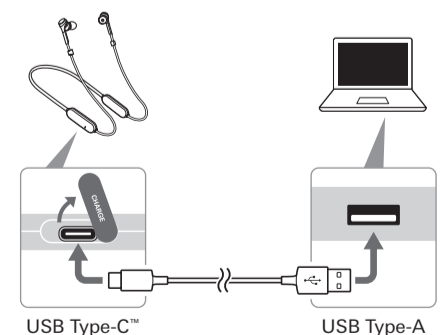
当您玩游戏或观看视频时，可以减少延迟。
(由于障碍物或无线电信号影响，蓝牙通信可能容易中断。)

玩遊戲或觀看影片時，可以减少延遲。
(藍牙通訊很容易由於障礙物或無線電波條件的影響而中斷。)

게임을 하거나 비디옌 볼 때 지연 없이 재생할 수 있습니다.
(장애물이나 무선파로 인해 Bluetooth 통신이 쉽게 중단될 수 있습니다.)



充电 / 充電 / 충전



支持信息 / 支援資訊 / 지원

关于如何使用本产品及解决各种问题的详细信息，请参阅“铁三角”网站上的用户手册。

有關本產品的使用方法以及各種問題的故障排除方法，請參閱「鐵三角」網站上的使用說明書。

본 제품의 사용법 및 문제 해결에 관한 자세한 사항은 Audio-Technica 웹사이트의 사용자 설명서를 참조하십시오.



www.audio-technica.com